

# BELIZE FACTS AND FIGURES

By: Frantz Smith

## Section: The Geology of Belize/ Pleistocene Alluvium Deposits

### Pleistocene Alluvium Deposits

To the east and north of the Maya Mountains are the Pleistocene alluvium deposits of the coastal areas. These infertile deposits were washed down from the Maya Mountains less than a million years ago and are made of sands, silts and non-expansive infertile clays like kaolinite and mica. These are recent deposits that have not had enough time to form rocks.

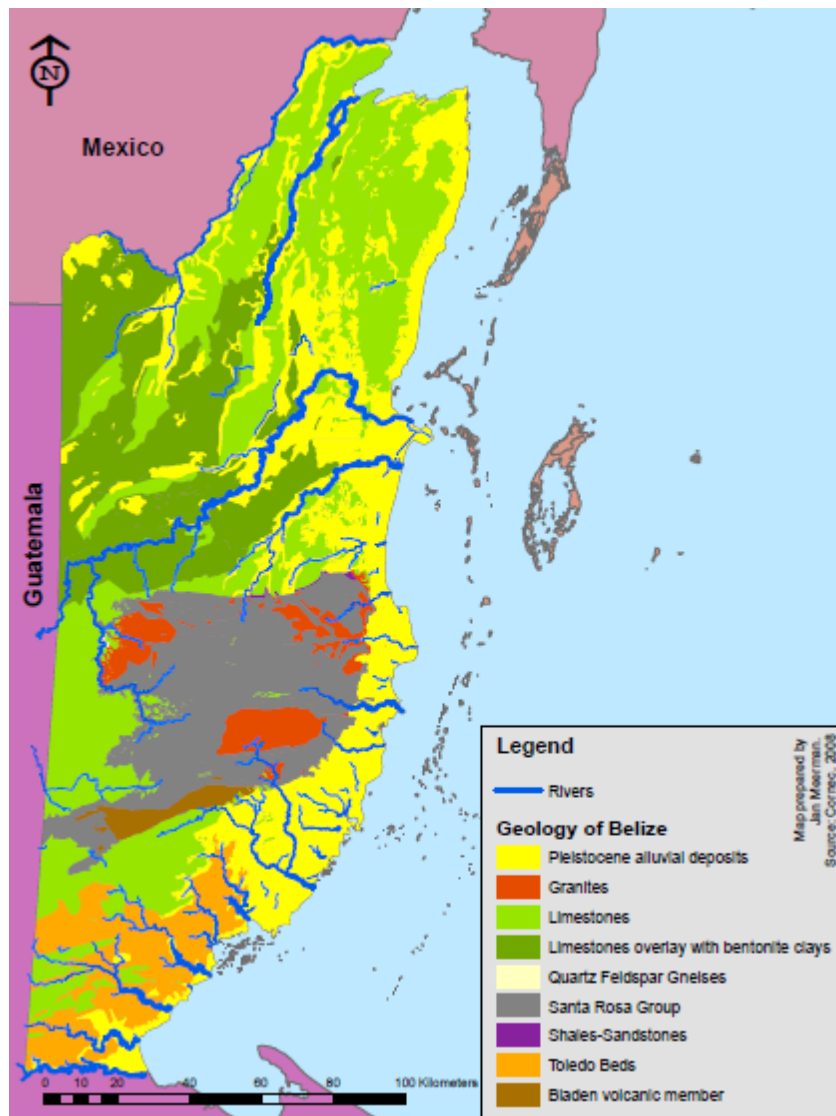


Figure 1: Map of the geology of Belize (Prepared by Mr. Jan Meerman).